



Chill Innovation KB-1BT

Wireless Bluetooth Micro Keyboard

USER MANUAL



CONTENTS

1. WELCOME	3
2. PRODUCT DESCRIPTION	3
3. PRODUCT PACKAGE	3
4. OVERVIEW	4
5. HARDWARE INSTALLATION	5
5.1. Connecting your keyboard	5
5.2. Charging the battery.....	6
6. DRIVER INSTALLATION AND USE	7
6.1. Microsoft Windows Mobile OS	7
6.2. Google Android OS	10
6.3. Nokia Symbian OS.....	12
6.4. Windows OS with IVT Bluetooth stack	13
6.5. Windows OS with Broadcom Bluetooth stack	14
6.6. Linux OS	15
6.7. iPhone & iPad with OS 4.0/4.1	16
7. USING YOUR KEYBOARD	18
7.1. Function overview	18
7.2. LED indicators.....	18
7.3. Power On / Off	19
7.4. Using the Function keys (Fn)	19
7.5. Using the media control keys	19
7.6. Flashlight / Laser Pointer function	20
7.7. Backlight	20
7.8. Power saving.....	20
7.9. Function of Combo Keys.....	20
8. TIPS AND TROUBLESHOOTING	20
9. IMPORTANT NOTES	21
9.1. Hardware Compatibility Disclaimer	21
9.2. FCC statement	21
9.3. CE.....	21
10. APPENDIX SPECIFICATIONS	22

1. Welcome

Thank you for purchasing this Wireless Bluetooth Micro Keyboard with Touchpad from Chill Innovation A/S. This document contains detailed instructions for installing and using the keyboard.

2. Product description

This keyboard will give you total control of your PC entertainment, right from the palm of your hands. Just sit back in your sofa and enjoy movies, music, share photos, surf the web.

Convenient media controls make the perfect remote control for HTPC entertainment.

Advanced Bluetooth wireless technology makes the keyboard be compatible with not only the computer running Windows or Linux but also handhelds running Android, Windows Mobile Pocket PCs, Symbian S60 Operating system, or Apple iPad, Apple iPhone with 4.0 OS.

You can use it for emails, chat, or to enjoy your favorite games from your mobile phone.

Backlight allows effortless text entry, even in low light.

Hi-grade Li-polymer battery recharge fast and last longer-----up to one month between charges.

While enjoying the movie in low light, the built-in flashlight will give you more convenience!

Style, comfort and portability, the keyboard will innovate your life.

3. Product package

The retail package contains:

Keyboard

Installation CD

Quick Start Guide

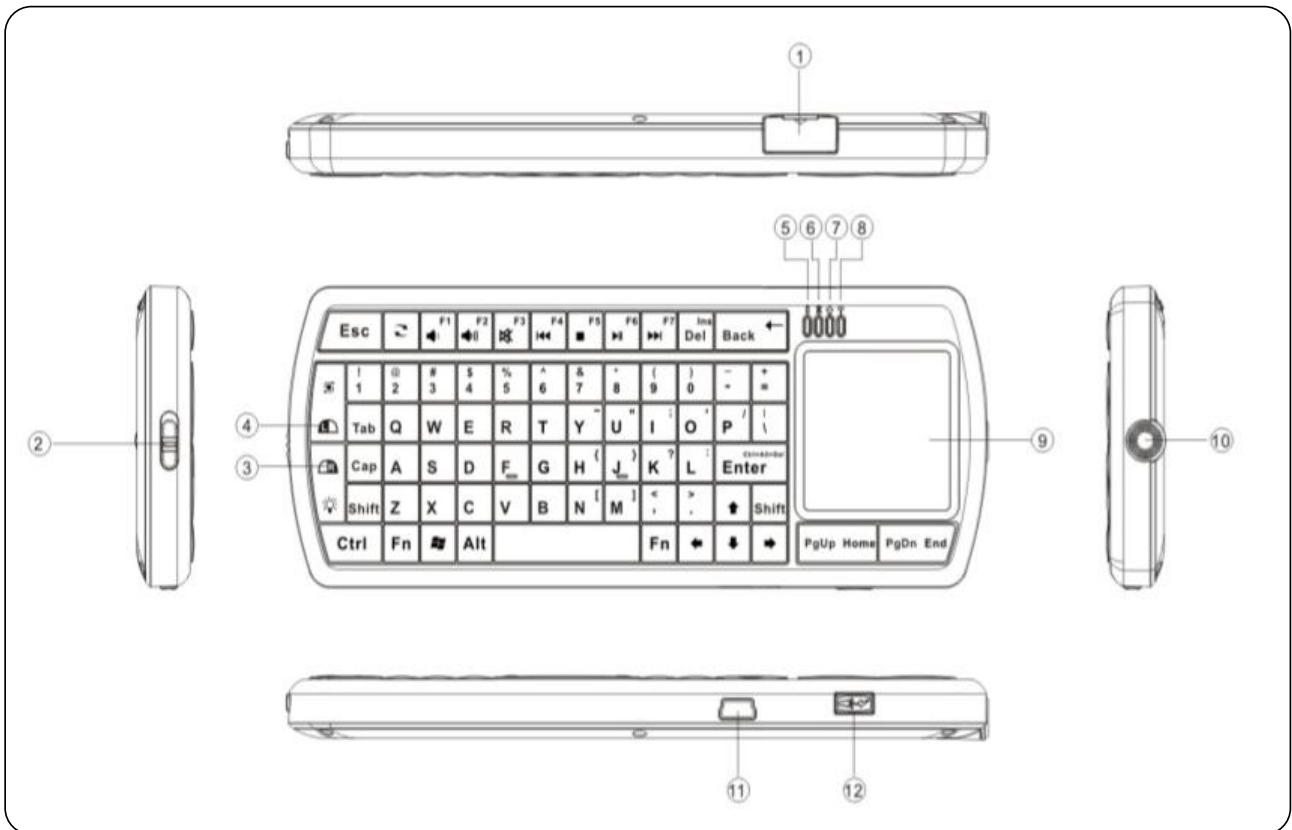
USB2.0 Power Cable

USB Bluetooth Nano Dongle

Dummy USB Dongle

If any items are damaged or missing, please contact your vendor.

4. Overview



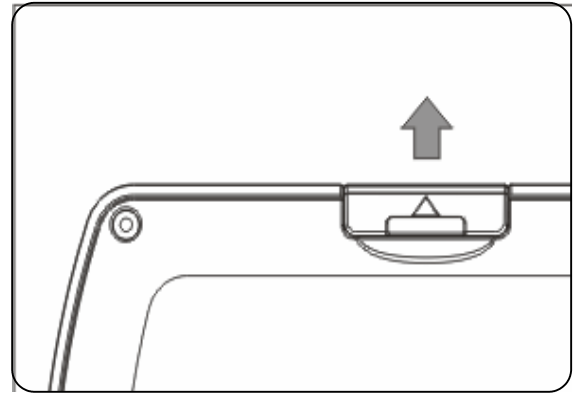
1. Bluetooth USB dongle
2. Power Switch
3. Mouse right key
4. Mouse left key
5. Battery Charging indicator
6. Low Battery indicator
7. Caps Lock indicator
8. Wireless communication indicator
9. Touchpad
10. Flashlight or Laser Pointer
11. Mini-USB Power port
12. Power switch for LED flashlight / laser pointer

5. Hardware Installation

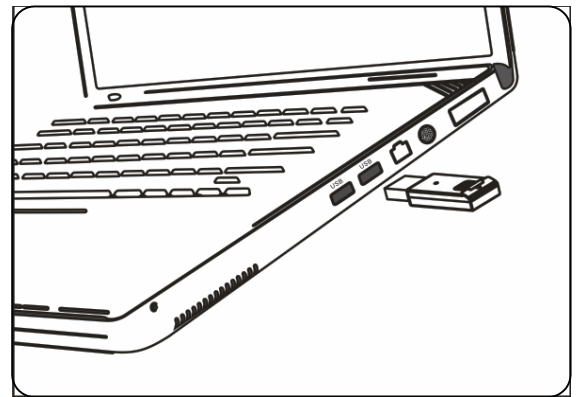
5.1. Connecting your keyboard

- 5.1.1. Take out the USB Bluetooth dongle from the keyboard compartment.

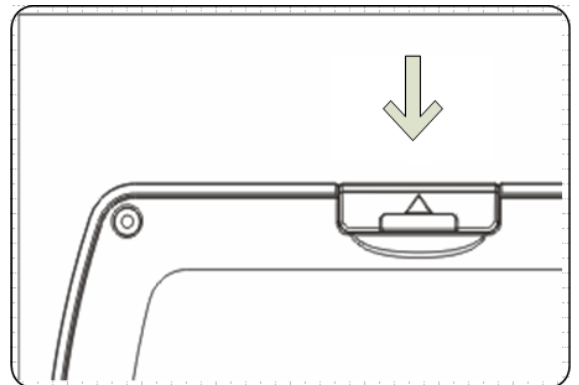
Note: The Bluetooth dongle is not required for smart devices / computers with already built-in Bluetooth wireless technology, but might provide better range. Avoid blocking obstacles, especially metal, for improved range. If necessary you can use an optional USB extension cord.



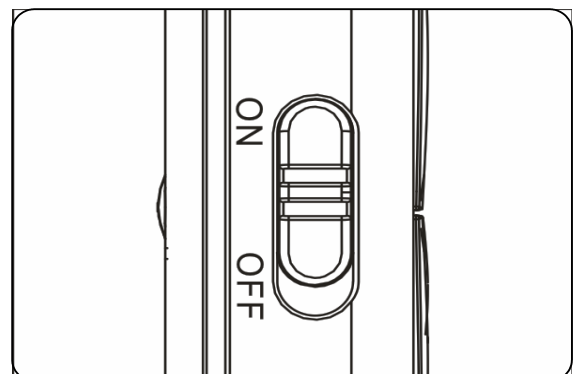
- 5.1.2. Plug the Bluetooth dongle into a USB port on your computer.



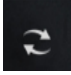

- 5.1.3. Put the dummy Bluetooth receiver into the empty compartment in the Keyboard



- 5.1.4. Turn the power switch to ON.



5.1.5. Pairing

Click the PAIR/CONNECT  key. The communication indicator  will blink repeatedly 2 sec. ON and 1 sec OFF to indicate the keyboard is in pairing mode.

Follow the instructions on your host device for discovering new Bluetooth devices.

Once the pairing is successfully established, the yellow LED will turn OFF.

The keyboard should now be ready for use with your computer/host.

5.2. Charging the battery

The Keyboard comes with a built-in Hi-grade Li-polymer battery. Please use only approved USB cables and chargers.

Connect the Keyboard and computer with the included USB cable to start charging the battery.

The red Battery Charging LED indicator (5) will turn on when charging is in progress.

A full charge takes about 4 hours and will last up to one month of use.

A 10 minutes charge will provide approximately one day of use.

When charging is completed, the charging LED will turn off.

Please pull out the charging cable from computer or AC Power source, and then remove the charger cable from keyboard afterwards.

When the battery capacity is getting low, the 'Low Battery' LED indicator (6) will start to blink.

Note: Before using the keyboard for the first time, the battery must be fully charged!

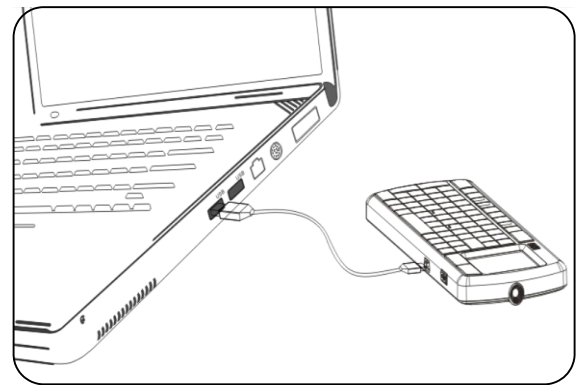


Figure. 5

6. Driver installation and use

6.1. Microsoft Windows Mobile OS

Connect your mobile device to your Desktop computer by using the USB port.

6.1.1. On your desktop:

- Insert Drivers CD and open the CD from “My computer”.
- Locate the “Windows Mobile” folder and “windows mobile.cab” CAB file inside (Bluetooth input driver).
- Open ActiveSync on your desktop and Click Explore.
- Copy the CAB file to your mobile device. You can do this by dragging and dropping the file from the desktop folder to the ‘My Documents’ folder on your device.

6.1.2. On your Windows Mobile device:

- Go to Start > Programs > File Explorer > My Documents
- Run the windows mobile.cab file (tap on it)

The Keyboard Driver will now install on your device. At the end of the installation, the setup will require to reset.

The first time you install the Keyboard Driver on your Windows Mobile device, you will see a prompt to activate the software:



If you press NO or if the Internet is not available, Activation will fail and you will not be able to use this software.

Make sure your Windows Mobile device is connected to the Internet and press YES. You only need to do this once, after the first installation.

6.1.3. Configuration and Troubleshooting

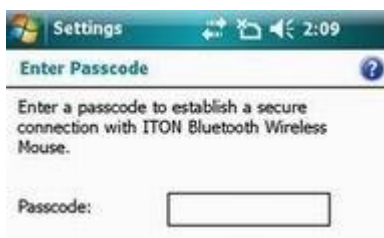
- After the software is successfully installed on your device, you need to pair the Bluetooth Keyboard.
- Make sure your Bluetooth keyboard is in PAIR/CONNECT mode (See 5.1.5)
- On your host device, open Bluetooth Devices, and click “Add new”



- After the Keyboard is discovered, select it, and then tap on “Next”



- When prompt for a passcode, leave the field blank and tap “Next” (if this fails, enter 0000 as a passcode and press Next)



- At this step select the “Input device” service and tap “Finish”.



- Go to the Software settings Panel, and tap “Connect”.

Here are a few solutions for the error messages that might appear in the software:

- ◆ *The software is not responding. You need to reinstall this software.*
This error is caused by a problem with the communication between the software components. You need to check if your Windows Mobile Device is compatible with the software, and to try to reinstall the software.

- ◆ *Bluetooth is turned off. To use the software, please enable your Bluetooth module!"*

Make sure you are using the software on a smartphone with Windows Mobile (5.0 or newer) and the Microsoft Bluetooth Stack. Activate Bluetooth before using the Software

- ◆ *No active Input Device found. You need to pair a device, using the Bluetooth control panel."*

Make sure your Bluetooth keyboard is correctly paired to your smart phone. If this error appears while your keyboard is paired, redo the pairing.

6.1.4. Settings panel

Open the setting panel

To open the settings panel, go to Start->Settings->System TAB, and tap the icon named "Bluetooth Input Driver"

The Settings panel displays several pages, for better access to the software options:



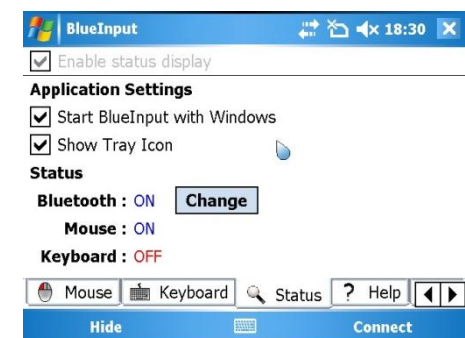
6.1.5. Keyboard Page

This page offers two options: enable / disable the keyboard functionality and enable / disable keyboard sounds.



6.1.6. Status Page

Here you can view the status and configure the driver to start when Windows Mobile starts (autostart) and you can enable / disable the Tray icon. The tray icon allows quick access to the Settings panel.



6.1.7. About

The 'About' page displays the software version and various useful information.



6.2. Google Android OS

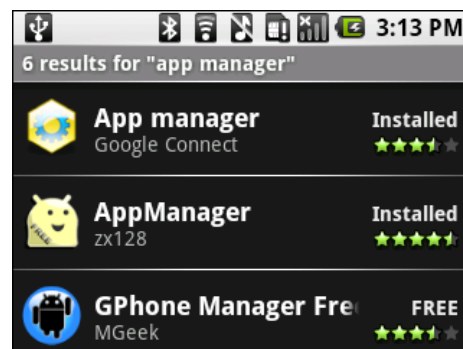
Installation

6.2.1. On your desktop:

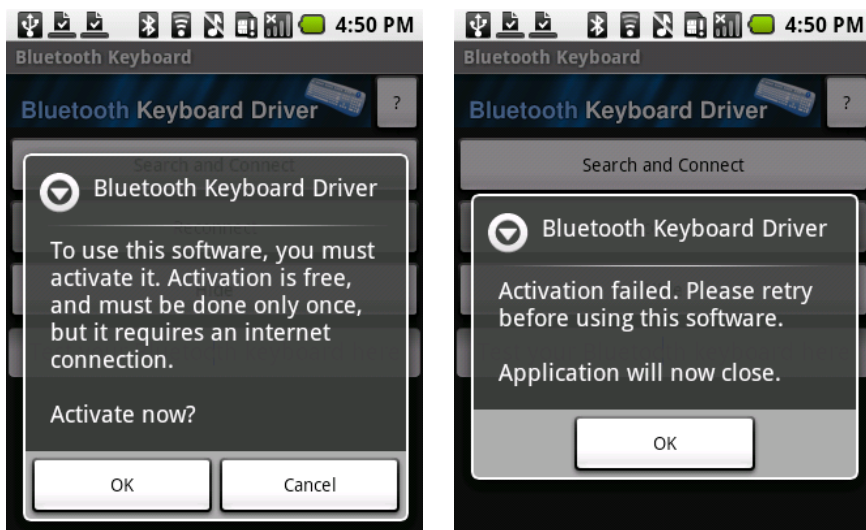
- Insert Drivers CD and open the CD from “My computer”
- Open “Android” folder and copy the “android.apk” file into your Android’s Memory Card

6.2.2. On your Android device:

- Open “Market”, and install an “App Manager / File Explorer of your choice. For example [File Explorer](#)
- Open the Manager and navigate to the ‘Android.apk’ file you copied over earlier.
- Run the ‘Android.apk’ file.



The first time you install the Bluetooth Keyboard Driver on your Android device, you will see a prompt to activate the software:



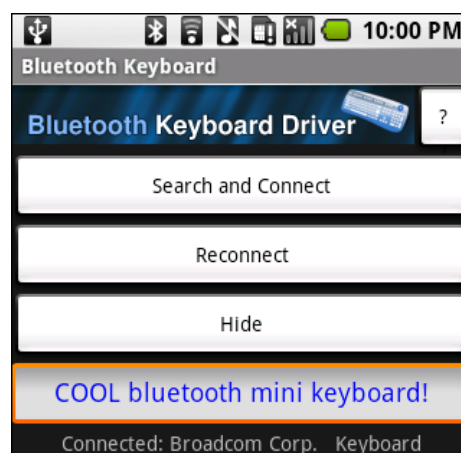
If you press Cancel or if the Internet is not available, Activation will fail and you will not be able to use this software.

So please make sure the Android is connected to the internet and press OK. You only need to do this once, after the first installation.

If you cannot activate the software (activation failed), even though you have internet access, then your Android device might lack Bluetooth HID keyboard support. See more under section 9.1 and contact the manufacturer of your Android Device.

After the Bluetooth keyboard Driver is successfully installed you need to pair the Keyboard with the Android device:

- Make sure your Bluetooth keyboard is in the pairing state (See 5.1.5).
- On your Android device, go to the menu with your installed applications (MENU).
- Locate the Bluetooth Keyboard Driver icon and tap on it.
- Make sure that Bluetooth is activated on your Android device, then tap “Search and Connect”.
- The software will automatically find the Bluetooth keyboard and connect to it.
- When connection is done, you can find your Bluetooth keyboard’s name “Micro keyboard” at the bottom:



Congratulations! The Bluetooth keyboard is now connected and you can test it by entering a text in the test zone as shown in the picture below.

6.2.3. Other Functions

Reconnect:

If the connection to the keyboard is lost (the message “keyboard disconnected” is displayed), you can reconnect by pressing the Reconnect button in the application.

Hide

Hides the Bluetooth Driver interface, but keeps the program alive in the background, so you can continue using the keyboard.

Question mark (?) / About / Help

Opens the About Dialog where you can see more details on this software.



6.2.4. Google Android Disclaimer

Because of the large number of Android devices available in the market, we cannot guarantee that the keyboard and software will work on your particular hardware configuration.

Even though Google Android is an open system, the individual hardware manufacturer might limit the support for 3rd party devices, like this keyboard, in their products, which is beyond our control.

For example, several HTC Smartphones do not support Bluetooth HID (Human Interface Device), and therefore cannot use Bluetooth Keyboards etc. by default, even though based on Google Android.

However, it is often possible to achieve compatibility by 'Rooting' the device and use 3rd party ROM / Software with HID support. Such intervention will most probably violate the manufacturer's warranty conditions though. We therefore cannot encourage or provide any support for such actions.

6.3. Nokia Symbian OS

Installation

6.3.1. On your desktop:

- Insert Drivers CD and open the CD from "My computer".
- Open "Nokia Wireless Keyboard Application" folder and choose your device model or Operating system version.
- Copy the .sis file into your device's memory card or you can connect your Nokia device to your computer USB port and copy the file directly.

6.3.2. On your Symbian device:

- Find the .sis file (on mobile device or memory card) and press "OK" button
- Follow the hints to finish the installation.
- Run the installed application and search for nearby Bluetooth Keyboard.

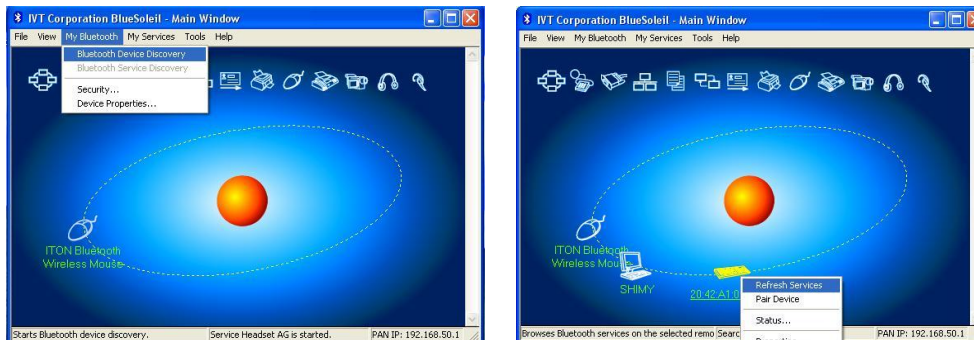


After paired and connected, you will have to set the keyboard layout.
If layout is not set correctly, the keyboard might not function as expected.

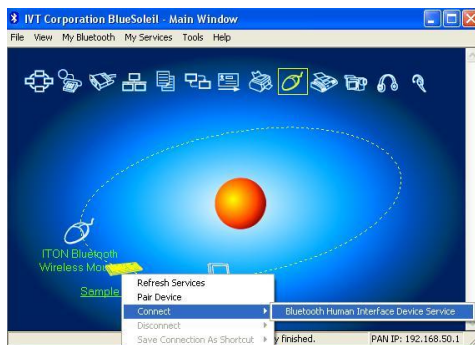
6.4. Windows OS with IVT Bluetooth stack

Configuration

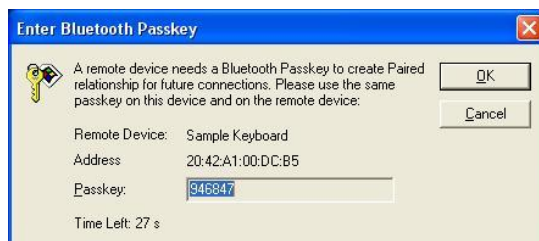
- Make sure that the Bluetooth function is active on your PC and the Bluetooth keyboard is in PAIR/CONNECT mode (See 5.1.5)
- Double click the Bluetooth Icon, open the Management window, select “Bluetooth Device discovery” or click the Round Ball in the middle of the window.



- Right click on the Bluetooth Keyboard found and select “Refresh Services”.



- Right click the Bluetooth Keyboard again and select “Connect-Bluetooth Input Service”.
- On the popup dialog you will see a code. Input the code on your Bluetooth Keyboard and press enter or OK.

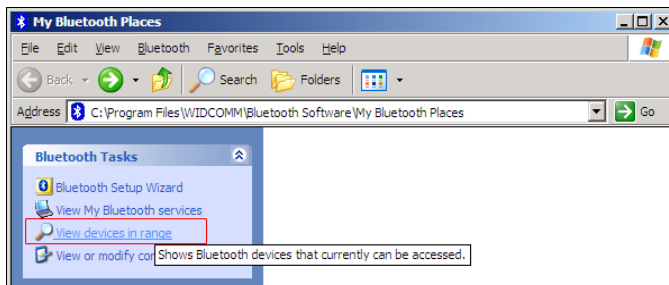


The system will auto install the HID drivers for the Bluetooth Keyboard.

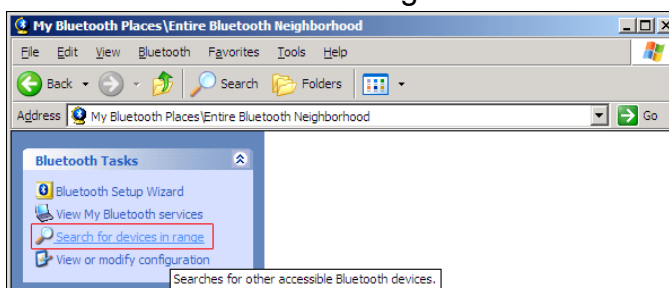
6.5. Windows OS with Broadcom Bluetooth stack

Configuration

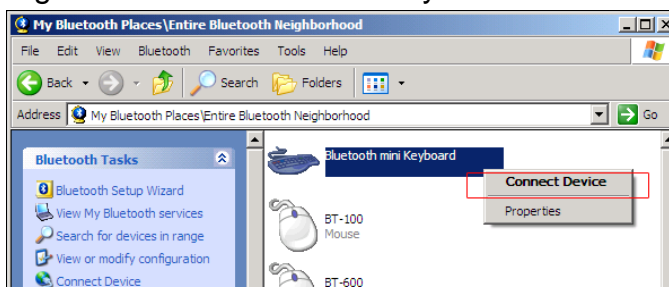
- Make sure that the Bluetooth function is active on your PC and the Bluetooth keyboard is in PAIR/CONNECT mode (See 5.1.5)
- Double click the Bluetooth icon, then click “View devices in range”



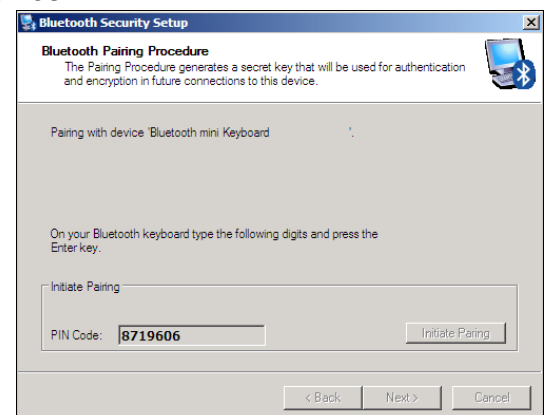
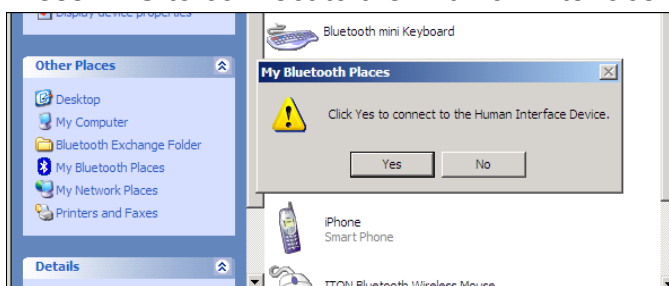
- Click “Search devices in range” and wait until the Bluetooth keyboard is found.



- Right click on the detected keyboard and choose “Connect device” in the popup.



- Press YES to connect to the “Human interface Device”



- Using the Bluetooth keyboard, type the number displayed on your screen, then press enter:

The keyboard is now connected and you can start using it with your applications.

6.6. Linux OS

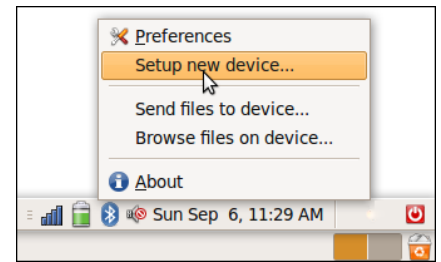
Configuration

NOTE: There are several Linux distributions available. This guide was designed for Ubuntu linux, but easily be adapted for other versions. Your desktop computer must be equipped with a Bluetooth module (built in, or USB Dongle).

- Make sure that Bluetooth is active on your PC and the Bluetooth keyboard is in PAIR/CONNECT mode (See 5.1.5)
- Click the Bluetooth icon and select “Setup new device”
- A wizard window opens, read the text and press “Forward”
- Wait until the keyboard is discovered, then select it and press “Forward”
- Type the code display on the Mini Bluetooth keyboard, then press Enter.

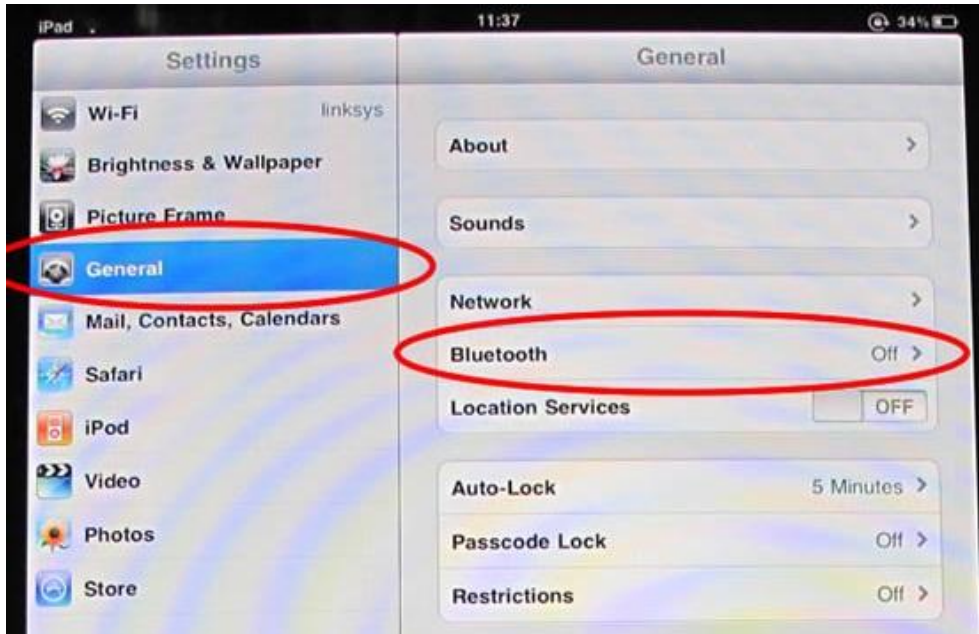
If the code was correctly entered, a confirmation message is displayed.

Now you can start using your Bluetooth keyboard.



6.7. iPhone & iPad with OS 4.0/4.1

- Turn "ON" the keyboard, and press the PAIR/CONNECT key (see 5.1.5).
- Enter 'Settings => General' and turn on the Bluetooth:



- After turning on Bluetooth, it will automatically search for new Bluetooth devices:





- When the "Bluetooth mini Keyboard" is found, tap it, and it will start connecting.



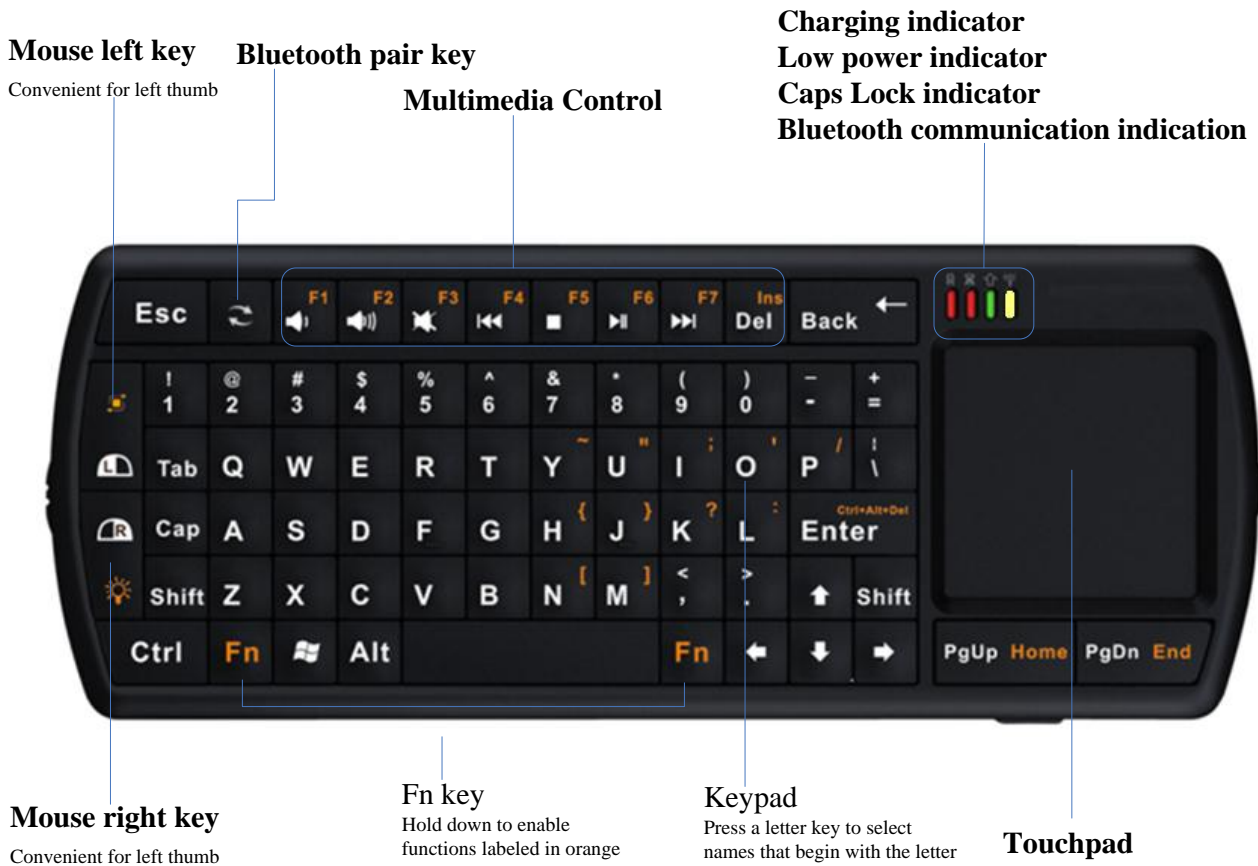
- When the popup appears, type in the displayed Passkey on your Bluetooth Keyboard and hit "Enter". It will then finalize the connection.
- You can now use your Bluetooth Micro Keyboard together with your iPad/iPhone.

Note: Since iPad does not have mouse support, the touchpad will not function either.







7. Using your keyboard



7.1. Function overview



7.2. LED indicators

-  **Charging indicator:**
The red LED will bright during battery charging. The LED will turn off when the battery is fully charged.
-  **Battery low indicator:**
The red LED will start to blink when battery capacity is low. Nearly time to recharge.
-  **Caps Lock indicator:**
When the LED is in green, the keyboard is in Capital status (Fn + A)
-  **Wireless Communication indicator:**
The yellow LED will bright for 5 seconds when the keyboard is turned on.
When pressing the PAIR/CONNECT key, the yellow LED will blink to indicate the keyboard is in pairing mode. When successfully paired, the LED will turn off.

7.3. Power On / Off



Push the power switch  to the “ON” position. The yellow LED  will bright for 5 seconds, and the backlight as well.

When the yellow LED turns off, you can use it as a regular QWERTY keyboard and the touchpad to control the mouse cursor.



When not using the keyboard, push the power switch to “OFF” position to save power.

7.4. Using the Function keys (Fn)


- Hold down one of the “Fn” keys to enable the functions labeled in orange.
- There are two special functional key on the mouse left and right key as below:

- ◆ Press  and  to toggle the touchpad direction vertically and horizontally. This is useful when using the keyboard with one hand, as a presenter or remote control.



- ◆ Press  and  to toggle Backlighting ON and OFF.



- ◆ Press  and **ESC** to toggle normal and double touchpad speed on

Nordic Keyboard version. Press  and **BACK** key on UK / US versions.

Nordic Keyboard Layout notice:

Since keyboard layout differs slightly between the Nordic countries, some “Fn” keys might only apply to certain language settings. Some “Fn” characters are displayed on multiple keys in order to support all Nordic keyboard layout standards.

The Æ/Ø/Ö and Ø/Æ/Ä keys can also be reversed by holding down the “Fn” key while pressing it for greater convenience.

7.5. Using the media control keys

The media control keys in the top will provide you easy access to the most common features used when watching movies and listening to music through PC etc.

Adjust the volume, mute, start / stop / pause and skip track with great ease and comfort.

7.6. Flashlight / Laser Pointer function

This Keyboard comes with a built-in LED Flashlight for great comfort when watching movies in the dark, locating nearby stuff or checking out notes during presentations etc.

The Keyboard also comes in an optional version featuring a Laser Point instead. This is great for presentation use.

7.7. Backlight

The Keyboard has a built-in backlight feature for easy typing in low light environments. There are two ways to control the backlit – by software and manually.

If you manually want to turn on the backlight, just press



and



keys.

7.8. Power saving

When the keyboard is not operated for 1 minute, it will go into sleep mode to save power. After 30 minutes of inactivity it will go into deep-sleep mode to save even more power. Just press any key to wake up the keyboard (except the touchpad).

For maximum power save, please turn OFF the keyboard when not in use.

7.9. Function of Combo Keys

7.9.1. Nokia S60

No	Combo Keys	Function
1	Alt + Tab	Menu key
2	Left shift + left win	Call key
3	Ctrl + Enter	Ok key

7.9.2. Android System

No	Combo Keys	Function
1	Alt + z	menu
2	F2	Call

8. Tips and troubleshooting

If a problem should occur, you can quickly solve it following one of the way showed as below:

- Restart your computer or console.
- Plug the USB mini-receiver into a different USB port.
- Restart your keyboard
- Recharge the keyboard
- Press the PAIR/CONNECT button to discover a Bluetooth host.
- Visit www.chill-innovation.com for manuals, drivers and software updates etc.

9. Important Notes

9.1. Hardware Compatibility Disclaimer

The keyboard and software have been tested and certified on all software platforms within the compatibility list.

However it is beyond our control if the individual hardware manufacturers limit the support for 3rd party devices, like this keyboard, in their products.

It is also beyond our control if the individual OS software maker might limit the support for 3rd party devices, like this keyboard, within future updates of their software.

Because of the large number of devices available in the market, we therefore cannot guarantee that this keyboard will work on your particular hardware configuration.

9.2. FCC statement

This equipment has been tested and found to comply with the limits for a Class B digital device, pursuant to Part 15 of the FCC Rules; these limits are designed to provide reasonable protection against harmful interference in a residential installation. This equipment generates, uses, and can radiate radio frequency energy and, if not installed and used in accordance with the instructions, may cause harmful interference to radio communications. However, there is no guarantee that interference will not occur in the particular installation. If this equipment does cause harmful interference to radio or television reception, which can be determined by turning the equipment off and on, the user is encouraged to try to correct the interference by one or more of the following measures:

- Reorient or relocate the receiving antenna.
- Increase the separation between the equipment and receiver.
- Connect the equipment into an outlet on a circuit different from that to which the receiver is connected.
- Consult an authorized dealer or service representative for help.

9.3. CE

Europe – EU Declaration of Conformity for Bluetooth wireless keyboard with integrated touchpad.

Products intended for sale within the European Union are marked with the CE Marking, which indicates compliance with the applicable Directives and European Norms, and amendments, identified below.

The manufacturer hereby declares that this Bluetooth Wireless Micro Keyboard is in compliance with the essential requirements and other relevant provisions of Directive 1999/5/EC.

10. Appendix Specifications

- 71 keys with Backlighting
- Multimedia & function keys

- Touchpad
 - Dimensions: 31 x 31 mm
 - Resolution: 400 DPI
 - Supports 'point and click'
 - 90 degree rotation (horizontal and vertical use)

- LED Flashlight or Laser Pointer built-in depending on model.

- Dimensions and weight
 - Keyboard: 155mm x 61mm x 12mm
 - Net weight: 102g (including dongle)
 - Packaging: 103 x 192 x 53 mm
 - Gross weight: 380g

- Connection
 - Bluetooth ® 2.0 Wireless Technology
 - Point-to-point technology pre-configured keyboard (Does not work as Hub)
 - Up to 10 meter range

- Power and battery
 - 30 days (battery standby time)
 - Full-charge: Takes approx. 4 hours
 - Fast-charge: Takes approx. 10 minutes for one day's use
 - Battery: 850 mAH Lithium Polymer
 - Power consumption (without backlight): <12mA
 - Standby consumption: <1.3mA

- Compatibility
 - Windows XP / Vista / 7, Mac & Linux-based PCs, Notebooks & Tablets.
 - Apple iPad
 - Apple iPhone & iPod Touch with OS 4.0
 - Windows Mobile 6.1 and 6.5
 - Nokia Symbian
 - Google Android
 - Sony Playstation 3
 - All other devices with built-in support for Bluetooth HID keyboards.

Visit www.chill-innovation.com for further information.